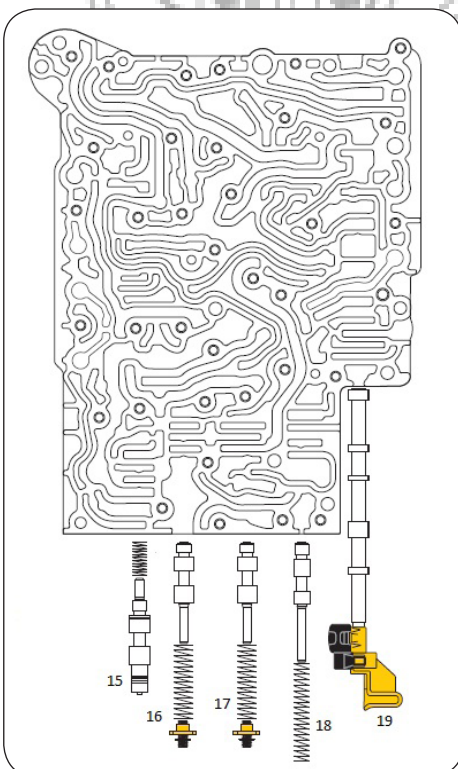
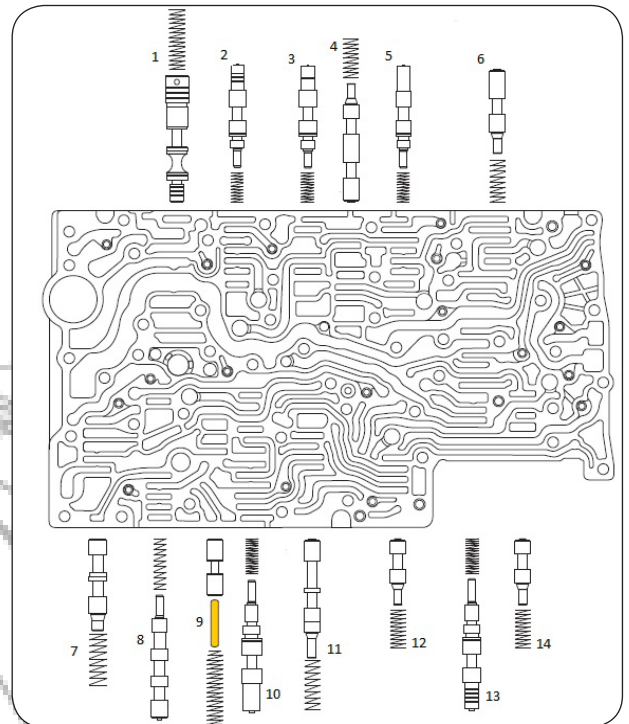
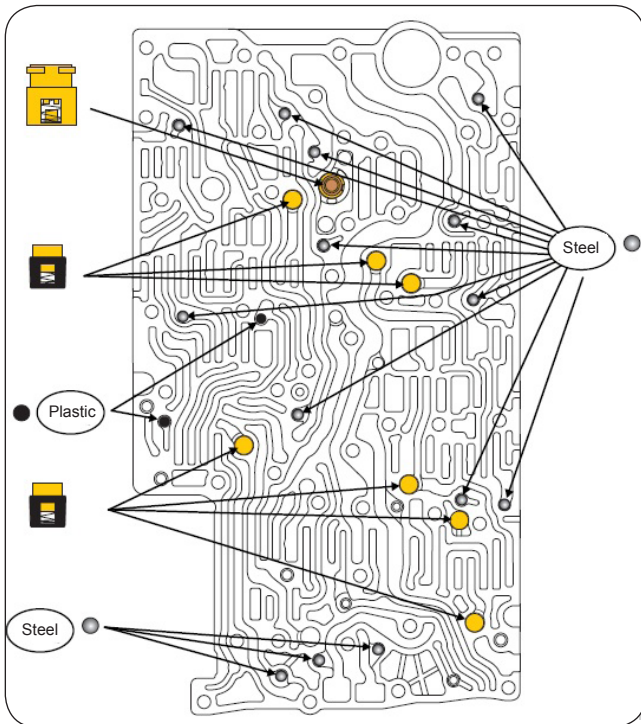


Phone: Sales on 0208 848 9911
E-Mail: sales@vanmatic.com

www.vanmatic.com

Mercedes 722.9 Checkball & Small Parts Locations



- 1 Working Pressure Regulating Valve
- 2 K1 Regulating Valve
- 3 B1 Regulating Valve
- 4 B1/B3 Shift Valve
- 5 B3 Regulating Valve
- 6 K3 Shift Valve
- 7 Converter Inlet Regulating Valve
- 8 Converter Clutch Shift Valve
- 9 Lubrication Pressure Regulating Valve
- 10 K2 Regulating Valve
- 11 Limp-Home Mode Shift Valve
- 12 K2 Shift Valve
- 13 B2/BR Regulating Valve
- 14 B2 - 2 Shift Valve
- 15 K3 Regulating Valve
- 16 Solenoid Regulating Valve 1 (TCC, PCS, K2, & B2/BR)
- 17 Solenoid Regulating Valve 2 (B1, K1, K3 & B3)
- 18 B2 - 1 Shift Valve
- 19 Manual Valve

ALLOMATIC
PRODUCTS COMPANY
A Raytech Powertrain, Inc. Company

ATEC
TRANS-TOOL

BorgWarner
Automotive

LIFE
Automotive
PRODUCTS, INC.

PRECISION
INTERNATIONAL

ZE

ALFO
MADE IN USA

TRANstec

HAYDEN AUTOMOTIVE
A COMPANY OF FOUR SEASONS DIMENSION, STANDARD MOTOR PRODUCTS, INC.

LUBE-GARD

Raybestos

Rostra
Precision
Controls, Inc.

SPX

FILTRAN

SUPERIOR
TRANSMISSION PARTS, INC.
THE SIMPLE SOLUTION

ATSG

TECKPAK
FITZALL
USA

TRANSO **sonnax**