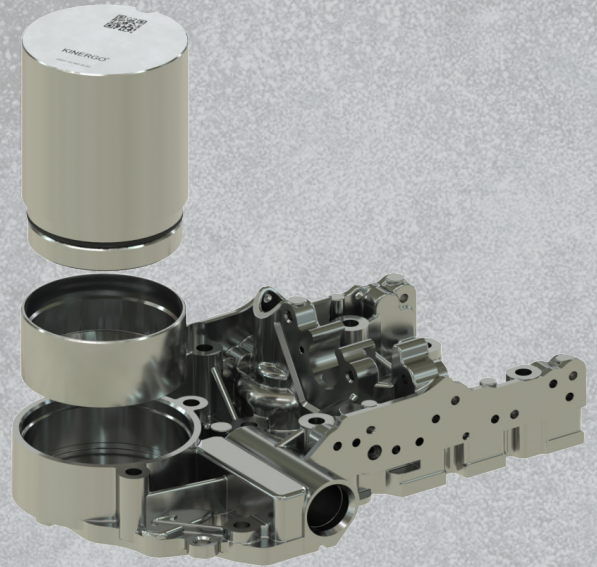


Kinergo Repair Kit For DQ200 (0AM, 0CW)

This repair kit allows you to perform the repair of the DSG 7 (0AM, 0CW DQ200) series gearboxes with a “dry clutch” in case of pressure problems. Pressure loss occurs as a result of cracks or structural failure (loss of tightness) in the area where the accumulator is attached to the valve body. Repair with the Kinergo kit does not require replacement of the mechatronics plate. The cup is fastened with standard screws for fastening the plate to the mechatronics body.

The Repair Kit includes:
Hydraulic accumulator – 1 pc.
Cup (adapter) – 1 pc.
O-ring – 2 pcs.

Order Special mounting wrench separately.



**DSG/0AM Accumulator Housing
Repair Kit
Part No. 120.MP.80**



**DSG/0AM Wrench For Accumulator
Housing Repair Kit
Part No. 120.TL.80**

